

Terra Areia

Stoneware



37002936 Dinner Plate Sand 28

37002937 Dessert Plate Sand 23

37002938 Bowl Sand 16

37002939 Round Platter Sand 40

37003014 Bread & Butter Plate 16

37003015 Dessert Plate 19,5

37003016 Round Platter 18

37003019 Cup



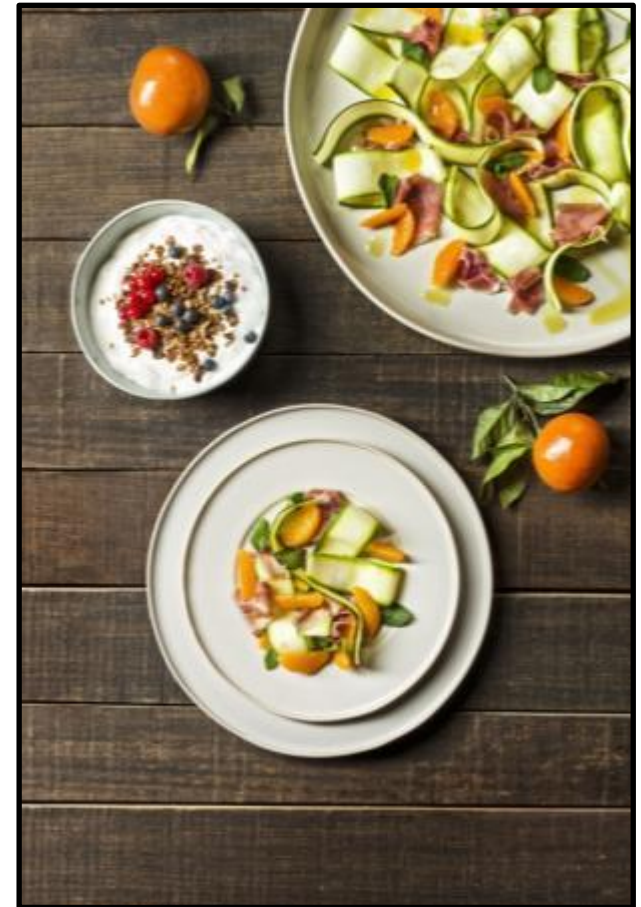
Terra, a line which takes us to the world of craft pottery, was created from a combination of formal elements characteristic of handmade products, and from elements found in products produced industrially. The result is the flat, straight surfaces, common in industrial products, but with the irregular finish typical of handicraft.

Terra Azul Stoneware



37002915	Dinner Plate Blue 28
37002926	Dessert Plate Blue 23
37002927	Bowl Blue 16
37002928	Round Platter Blue 40

37003007	Bread & Butter Plate 16
37003008	Dessert Plate 19,5
37003009	Round Platter 18
37003012	Cup



Terra, a line which takes us to the world of craft pottery, was created from a combination of formal elements characteristic of handmade products, and from elements found in products produced industrially. The result is the flat, straight surfaces, common in industrial products, but with the irregular finish typical of handicraft.

Terra Turquesa

Stoneware



37003020 Dinner Plate 28

37003021 Dessert Plate 23

37003022 Bowl 16

37003023 Round Platter 40

37003025 Bread & Butter Plate 16

37003026 Dessert Plate 19,5

37003027 Round Platter 18

37003030 Cup



Terra, a line which takes us to the world of craft pottery, was created from a combination of formal elements characteristic of handmade products, and from elements found in products produced industrially. The result is the flat, straight surfaces, common in industrial products, but with the irregular finish typical of handcraft.

Terra Safira

Stoneware



37003031 Dinner Plate 28

37003032 Dessert Plate 23

37003033 Bowl 16

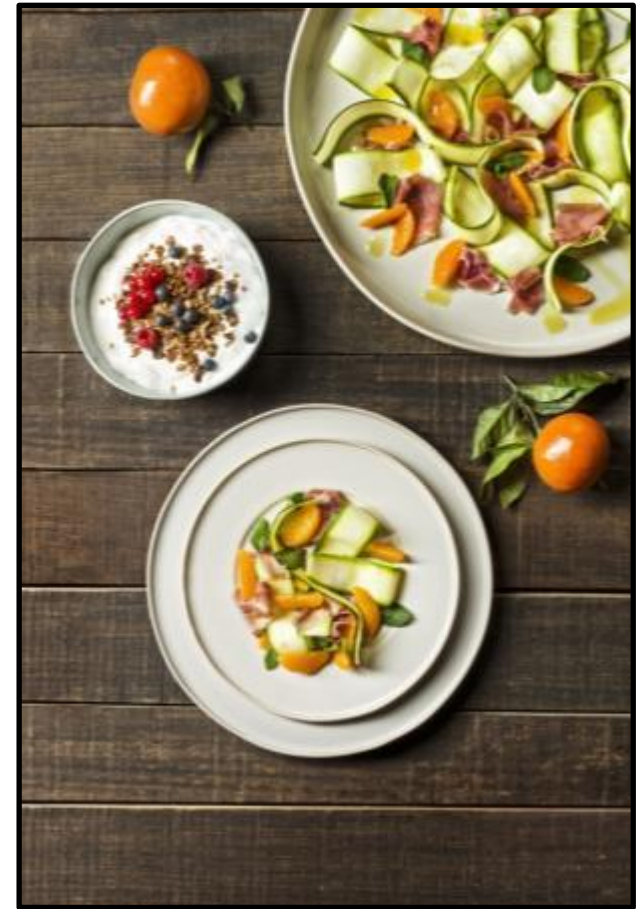
37003034 Round Platter 40

37003036 Bread & Butter Plate 16

37003037 Dessert Plate 19,5

37003038 Round Platter 18

37003041 Cup



Terra, a line which takes us to the world of craft pottery, was created from a combination of formal elements characteristic of handmade products, and from elements found in products produced industrially. The result is the flat, straight surfaces, common in industrial products, but with the irregular finish typical of handcraft.