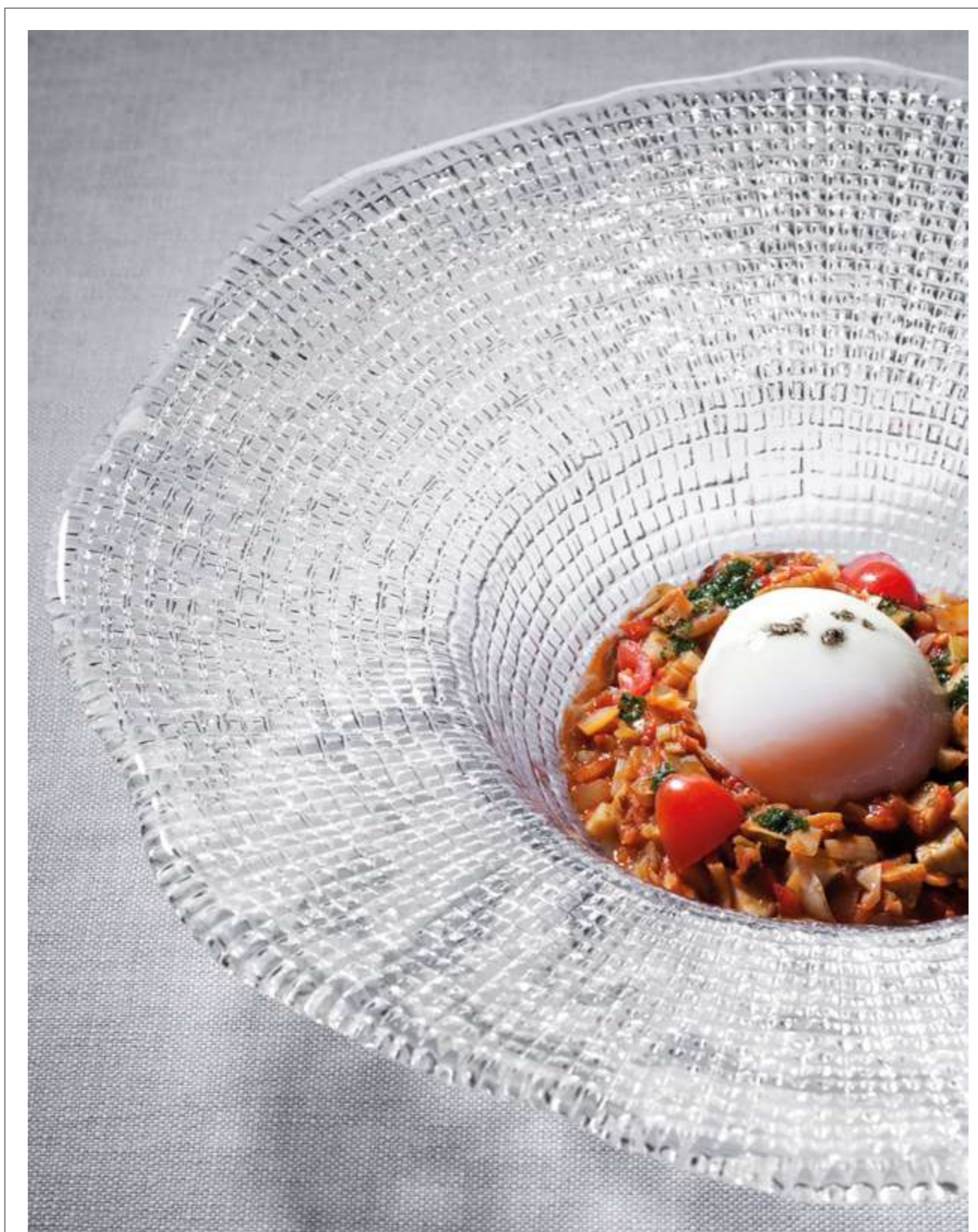


# DIAMANTÉ

2010

## DIAMANTÉ | Collezione in vetro trasparente e decorato Collection in clear and decorated glass



6230.1



8566.1



6691.1



6672.1



8592.1



8591.1



8593.1

Trasparente  
Clear

**6230.1** Ciotolino | *Small cup*  
Ø cm. 9 - h cm. 3,5  
Ø inch. 3,5 - h inch. 1,4

**8566.1** Set caviale  
*Caviar set*  
Ø cm. 18 - h cm. 5,5  
Ø inch. 7,1 - h inch. 2,2

**6691.1** Piatto antipasto |  
*Starter bowl*  
Ø cm. 21 - h cm. 4  
Ø inch. 8,3 - h inch. 1,6

**6672.1** Piatto pasta | *Pasta bowl*  
Ø cm. 30 - h cm. 7  
Ø inch. 11,8 - h inch. 2,8

**8592.1** Vassoio ovale | *Oval tray*  
cm. 43x16 - h cm 2  
inch. 17x6,3 - h inch. 0,8

**8591.1** Vassoio ovale | *Oval tray*  
cm. 34x15 - h cm 2  
inch. 13,4x5,9 - h inch. 0,8

**8593.1** Coppa | *Bowl*  
cm. 28x28 - h cm 7  
inch. 11x11 - h inch. 2,8

PR DR





DIAMANTÉ | Collezione in vetro trasparente e decorato  
Collection in clear and decorated glass



6623.1



5533.2



6919.1



6920.1



6921.1



5532.1

Trasparente  
Clear

**6623.1** Coppetta | Individual bowl  
Ø cm. 16 - h cm. 5,2  
Ø inch. 6,3 - h inch. 2

**5533.2** Coppetta | Individual bowl  
Ø cm. 18 - h cm. 5,5  
Ø inch. 7,1 - h inch. 2,2

**6919.1** Coppetta | Individual bowl  
Ø 14,5 - h cm. 4,5  
Ø inch. 5,7 - h inch. 1,8

**6920.1** Coppa | Bowl  
Ø cm. 20 - h cm. 7  
Ø inch. 7,9 - h inch. 2,8

**6921.1** Coppa | Bowl  
Ø cm. 28 - h cm. 9  
Ø inch. 11 - h inch. 3,5

**5532.1** Coppa | Bowl  
Ø cm. 33 - h cm. 9  
Ø inch. 13 - h inch. 3,5

PR

DR





DIAMANTÉ | Collezione in vetro trasparente e decorato  
Collection in clear and decorated glass

Trasparente  
Clear



8371.1

5690.1

6246.1

**8371.1** Piatto | Plate  
Ø cm. 15 - h cm. 1,7  
Ø inch. 5,9 - h inch. 0,7

**5690.1** Piatto | Plate  
Ø cm. 18 - h cm. 1,7  
Ø inch. 7,1 - h inch. 0,7

**6246.1** Piatto | Plate  
Ø cm. 22 - h cm. 2  
Ø inch. 8,7 - h inch. 0,8



5531.2

5530.2

**5531.2** Piatto fondo | Soup dish  
Ø cm. 24 - h cm. 4  
Ø inch. 9,5 - h inch. 1,6

**5530.2** Piatto | Plate  
Ø cm. 28 - h cm. 3,2  
Ø inch. 11 - h inch. 1,3



5544.1

5534.1

**5544.1** Piatto | Platter  
Ø cm. 34 - h cm. 1,7  
Ø inch. 13,4 - h inch. 0,7

**5534.1** Piatto | Platter  
Ø cm. 37 - h cm. 2  
Ø inch. 14,6 - h inch. 0,8



5529.2

**5529.2** Sottopiatto | Charger  
Ø cm. 34 - h cm. 2  
Ø inch. 13,4 - h inch. 0,8

PR DR





6247.1

Trasparente  
Clear

**6247.1** Piatto formaggio con alette  
*Cheese platter with grips*  
Ø cm. 32 - h cm. 2,5  
Ø inch. 12,6 - h inch. 1

PR

DR



5546.1



6244.1

**5546.1** Antipastiera ottagonale  
*Octagonal appetizer tray*  
cm. 33x33 - h cm. 2,7  
inch. 13x13 - h inch. 1,1

**6244.1** Piatto ostriche  
*Oyster platter*  
Ø cm. 34 - h cm. 3,2  
Ø inch. 13,4 - h inch. 1,3

PR

DR



6050.1



5548.1

**6050.1** Centro | *Centrepiece*  
Ø cm. 41 - h cm. 6  
Ø inch. 16,1 - h inch. 2,4

**5548.1** Fruttiera | *Fruit bowl*  
Ø cm. 32 - h cm. 5  
Ø inch. 12,6 - h inch. 2

PR

DR

FAMILY



PAG. 70



PAG. 69



PAG. 69



6903.1



6904.1



6897.1

Piatto trasparente  
Clear plate

**6903.1**  
cm. 16x16 - h cm. 1,5  
inch. 6,3x6,3 - h inch. 0,6

**6904.1**  
cm. 20x20 - h cm. 1,5  
inch. 7,9x7,9 - h inch. 0,6

**6897.1**  
cm. 23,5x23,5 - h cm. 1,5  
inch. 9,2x9,2 - h inch. 0,6



6898.1



6899.1

**6898.1**  
cm. 27,5x27,5 - h cm. 1,5  
inch. 10,8x10,8 - h inch. 0,6

**6899.1**  
cm. 31,5x31,5 - h cm. 1,5  
inch. 12,4x12,4 - h inch. 0,6

PR

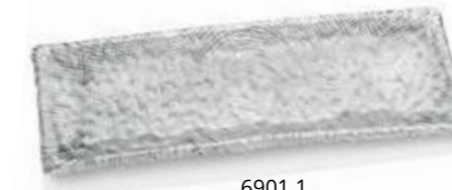
DR



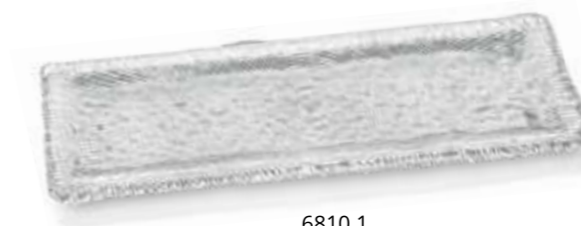
6902.1

Vassoio trasparente  
Clear tray

**6902.1**  
cm. 31x12,5 - h cm. 1,5  
inch. 12,2x4,9 - h inch. 0,6



6901.1



6810.1

**6901.1**  
cm. 43x13 - h cm. 1,5  
inch. 17x5,1 - h inch. 0,6

**6810.1**  
cm. 53x17 - h cm. 1,5  
inch. 20,9x6,7 - h inch. 0,6

PR

DR





DIAMANTÉ

Collezione in vetro trasparente e decorato  
Collection in clear and decorated glass



5533.3



5529.3

**Decoro cromo sabbia**  
*Beige/chrome decoration*

**5533.3** Coppetta | *Individual bowl*  
Ø cm. 18 - h cm. 5,5  
Ø inch. 7,1 - h inch. 2,2

**5529.3** Sottopiatto | *Charger*  
Ø cm. 34 - h cm. 2  
Ø inch. 13,4 - h inch. 0,8

PR HW HD



5534.3



5548.3

**5534.3** Piatto | *Platter*  
Ø cm. 37 - h cm. 2  
Ø inch. 14,6 - h inch. 0,8

**5548.3** Fruttiera | *Fruit bowl*  
Ø cm. 32 - h cm. 5  
Ø inch. 12,6 - h inch. 2

PR HW HD



6050.2



5532.2

**6050.2** Centro | *Centrepiece*  
Ø cm. 41 - h cm. 6  
Ø inch. 16,1 - h inch. 2,4

**5532.2** Coppa | *Bowl*  
Ø cm. 33 - h cm. 9  
Ø inch. 13 - h inch. 3,5

PR HW HD



# FOLIES

2018



FOLIES

Collezione in vetro trasparente e decorato  
Collection in clear and decorated glass



8358.1

Trasparente  
Clear

**8358.1** Centrotavola | *Centrepiece*  
Ø cm. 41 - h cm. 11  
Ø inch. 16,1 - h inch. 4,3

PR

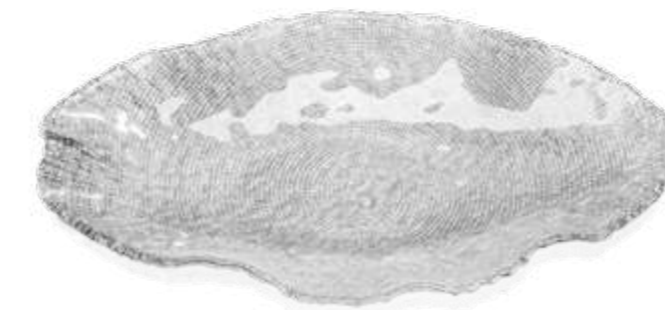
DR



8291.1

Trasparente  
Clear

**8291.1** Vassoio | *Tray*  
cm. 52x22,5 - h cm. 5  
inch. 20,5x8,9 - h inch. 2



8290.1

**8290.1** Centrotavola | *Centrepiece*  
cm. 50x29 - h cm. 9  
inch. 19,7x11,5 - h inch. 3,5

PR

DR

# DIAMANTÉ

2010

DIAMANTÉ

Collezione in vetro trasparente e decorato  
Collection in clear and decorated glass



8255.1 / 8254.1

Portadolci smerlato trasparente  
Clear scalloped footed plate

**8255.1**

Ø cm. 26 - h cm. 10,5  
Ø inch. 10,2 - h inch. 4,1

**8254.1**

Ø cm. 33 - h cm. 10,5  
Ø inch. 13 - h inch. 4,1

PR

HW



8368.1

Alzate a 2, 3 piani con accessorio  
in metallo | 2, 3 - tiers cake stands  
with metal support

**8368.1** Trasparente | Clear

h cm. 24,5  
h inch. 9,6  
Piatti | Plates  
Ø cm. 18 - 15  
Ø inch. 7,1 - 5,9



8370.1

**8370.1** Trasparente | Clear

h cm. 25  
h inch. 9,8  
Piatti | Plates  
cm. 23x23 - 16x16  
inch. 9x9 - 6,3x6,3



7190.1

**7190.1** Trasparente | Clear

h cm. 35  
h inch. 13,8  
Piatti | Plates  
Ø cm. 28 - 22 - 18  
Ø inch. 11 - 8,7 - 7,1

PR

HW





5541.1 / 5542.1

Portadolci | *Footed plate*Trasparente | *Clear*

**5541.1**  
 Ø cm. 25 - h cm. 11  
 Ø inch. 9,8 - h inch. 4,3

**5542.1**  
 Ø cm. 32 - h cm. 11,5  
 Ø inch. 12,6 - h inch. 4,5



5541.4 / 5542.5

Decoro cromo sabbia  
*Beige/chrome decoration*

**5541.4**  
 Ø cm. 25 - h cm. 11  
 Ø inch. 9,8 - h inch. 4,3

**5542.5**  
 Ø cm. 32 - h cm. 11,5  
 Ø inch. 12,6 - h inch. 4,5

PR HW HD



6670.1 / 6627.1

Portadolci | *Footed plate*Trasparente | *Clear*

**6670.1**  
 Ø cm. 26 - h cm. 9,5  
 Ø inch. 10,2 - h inch. 3,7

**6627.1**  
 Ø cm. 33 - h cm. 9,5  
 Ø inch. 13 - h inch. 3,7



6670.2 / 6627.2

Decoro oro | *Gold decoration*

**6670.2**  
 Ø cm. 26 - h cm. 9,5  
 Ø inch. 10 - h inch. 3,7

**6627.2**  
 Ø cm. 33 - h cm. 9,5  
 Ø inch. 13 - h inch. 3,7

PR HW HD

Da combinare con gli articoli della collezione DIAMANTÉ in base al diametro  
 To be combined with DIAMANTÉ products according to diameter



6975.1



4557.1

Trasparente  
*Clear*

**6975.1** Campana | *Dome*  
 Ø cm. 26 - h cm. 19,5  
 Ø inch. 10,2 - h inch. 7,7

**4557.1** Orizzonte Campana | *Dome*  
 Ø cm. 28 - h cm. 20,3  
 Ø inch. 11 - h inch. 8

HB DR



7192.1

**7192.1** Alzata a 3 piani  
*3 tier cake stand*  
 h cm. 35  
 h inch. 13,8  
 Piatti | *Plates*  
 Ø cm. 32 - 26 - 19  
 Ø inch. 12,6 - 10 - 7,5  
 Accessorio metallo | *Metal support*

PR DR